

04/23/2024

FAIRLINE TARGA 47 GT FOLLOWING THE SUN

JD YACHTS.

JD Yachts
80 The Esplanade
Weymouth
Dorset
United Kingdom
DT4 7AA
Tel: +44 (0)1305 766 504
sales@jdyachts.com



FAIRLINE TARGA 47 GT FOLLOWING THE SUN

GBP 289,950 INC TAX

MAIN CHARACTERISTICS

Year:	2008
Hull Colours:	Sandstone Beige
Lying:	Lymington, UK
Engine(s):	2 x 575 HP Diesel Volvo D9
Hours:	800
Length:	14.78 m / 48' 6"
Beam:	3.000 m / 9' 10"
Draft:	1.050 m / 3' 5"
Weight:	14 tons
Fuel Capacity:	1380 litres / 303 gallons
Water Capacity:	364 litres / 80 gallons
Accommodation:	6 berths in 2 cabins

EXTRAS

- Onan 8 Kva Generator
- Air Conditioning
- Webasto Diesel Heating with Outlet Feeds to Main Cabins
- Additional Webasto Diesel Heating with Outlet Feeds to Cockpit Area
- SidePower Bow Thruster
- SidePower Stern Thruster
- NEW Camper Covers inc. Bespoke Bimini Cover for Aft Bathing Area
- Bespoke Additional Canopy Enclosure Option
- Raymarine e127 HybridTouch MFD
- Raymarine HD Color Raydome
- Raymarine pSeries Autopilot
- Raymarine iSeries MFD
- Raymarine Raydome
- Raymarine TracVision. Additional Dummy Dome
- AIS
- Teak Laid Bathing Platform
- Teak Laid Cockpit
- Light American Satin Oak Interior Wood Finish
- Holding tank
- Cockpit Wetbar inc Griddle, Fridge
- Additional Grab Rails to Roof Sections Alongside
- Hydraulic Passarelle
- Upgraded Stereo and Fusion Speakers
- Samsung Smart TV's

STANDARD SPECIFICATION

HULLFORM AND CONSTRUCTION

All gel coat and glass fibre hand laid with unidirectional, biaxial and woven rovings
Bowthruster 8hp
Coloured hull top band
Deep V forward; 18deg deadrise aft
Designed by Bernard Olesinski and the Fairline design team
Full length moulded spray deflectors
Hull/deck join bolted and bonded
Integrally moulded engine bearers
Isophthalic gel coat backed by isophthalic resin-rich powder-bound glass mat
The deck incorporates polyurethane foam cores for high strength and excellent thermal insulation
The integral bathing platform gives the boat a longer waterline length for improved performance, particularly at reduced power settings
The propellers are set in semi-tunnels enabling the engines to be located further aft, also reducing draught and improving efficiency by reducing the shaft angle
Transverse and longitudinal strengthening stringers throughout hull

DECK

Anchor chain locker
Anchor winch (electric)
Anchor winch controls
Calibrated anchor chain
Concealed telescopic swim ladder to bathing platform
Full set of IMCO navigation lights
Garage with winch system for concealed stowage of optional Jet RIB or PWC beneath aft sundeck
Hot and cold water transom shower
Moulded non-slip deck surface
Rubbing strake
Recessed self-draining area on foredeck for coachroof sun cushions
Remote control searchlight
Riding light
Self-stowing Delta anchor
Stainless steel bow fairlead(s)
Stainless steel bow, spring and stern cleats
Stainless steel handrails
Stainless steel stemhead roller
Storage in garage
Teak laid bathing platform
Toughened glass curved windscreen
Transom gate from cockpit to integral bathing platform
Twin horns
Water filler(s)
Windscreen washers

04/23/2024

FAIRLINE TARGA 47 GT FOLLOWING THE SUN

Windscreen wipers

HELM POSITION

12v socket

Adjustable/tilt steering wheel

Bilge pump switches with integral operating warning lights and audible alarms

Bolstered helm seat(s)

Bowthruster controls

Chart stowage

Chart table and light

Controls for engine bay fire extinguisher system

Drinks holders

Echosounder and speedometer/distance log repeater(s) with sea water temperature read out

Electronic single-lever throttle and gear controls

Folding foot plinth

Fuel gauges

Full engine instrumentation including tachometers, oil pressure gauges, temperature gauges, battery condition indicators, audible alarms and engine hour meters

Helm position indicator

High speed magnetic compass

Hydraulic steering

Remote anchor winch controls

Searchlight controls

Trim tab controls

Twin helm seats

VHF radio telephone

Waterproof switches for navigation and riding lights, windscreen wipers and engine bay extractor fan(s)

COCKPIT

12v heavy duty weatherproof socket

Access via transom deck to port and starboard side decks

Aft cockpit hood with clear panels and zipped doorway

Bathing platform lights

Central dining area

Cockpit bar with teak top, refrigerator, sink, hot and cold water, insulated coolbox

Companion seating to helm

Drinks holders

Engine bay access hatch with stainless steel pneumatic support struts, independent of the tender garage

Fender stowage

Glove locker

Life raft stowage

Manual bilge pump(s)

Retractable powered hard top

04/23/2024

FAIRLINE TARGA 47 GT FOLLOWING THE SUN

'Reticulated' non-absorbent foam cushions for aft sundeck
Stainless steel handrails
Stowage lockers under cockpit seats
Teak drinks holders
Teak-laid floor throughout self-draining cockpit
Warning light and audible alarm during garage door operation
Warp lockers

MAIN SALOON

Aerial and connections for television
Bar unit
CD/radio with 2 speakers in saloon and 2 waterproof speakers in cockpit
Cocktail table converts to dining table
Control panel for 12v/24v/240v domestic electrical circuits
Deck hatch with flyscreen and blind
Full-height standing headroom
Halogen ceiling lights
Handrail
LCD TV
Lockers (overhead)
Sliding door to cockpit with integral blind system
Sofa
Stainless steel opening porthole(s) with flyscreen
Stowage locker under floor

GALLEY

Crockery stowage
Electric ceramic/halogen hob
Extractor fan
Work surface with covers
Halogen ceiling lights
Integrated waste bin
Lacquered cupboard doors
Lockers (overhead)
Microwave oven
Refrigerator (172L)/freezer (46L) with double door
Random teak floor
Sink/drainage with hot and cold mixer tap
Stainless steel opening porthole(s) with flyscreen
Work surface lights

MASTER CABIN

Access to en suite bathroom

04/23/2024

FAIRLINE TARGA 47 GT FOLLOWING THE SUN

Bedside stowage
Drawer(s) under bed
Full-height standing headroom
Halogen ceiling lights
Hanging locker (full-height)
Large hatch with flyscreen and concealed blinds to foredeck
Mirror
Moulded stowage locker under hinged bedboard
Oversized double bed
Reading lights
Stainless steel opening porthole(s) with flyscreen
Upholstered bedhead
Wardrobe(s)

MASTER EN SUITE BATHROOM

220v/240v shaving point
Automatic shower tray pump-out system
Electric silent-flush freshwater toilet
Extractor fan
Vanity unit locker and basin
with hot and cold pressurised water
Full set of bathroom fittings
Full standing height circular shower with solid teak gratings and rotating screen
Halogen ceiling lights
Mirror
Random teak floor
Stainless steel opening porthole(s) with flyscreen

AFT CABIN

Access to en suite bathroom
Bedside stowage
Full length berths x 2 with sliding conversion to double
Halogen ceiling lights
Mirror
Opening window to cockpit
Reading lights
Stainless steel opening porthole(s) with flyscreen
Upholstered bedheads
Wardrobe(s)
Aft Cabin En Suite Bathroom: 220v/240v shaving point
Automatic shower tray pump-out system
Electric silent-flush freshwater toilet
Extractor fan
Vanity unit locker and basin with hot and cold pressurised water
Full set of bathroom fittings

04/23/2024

FAIRLINE TARGA 47 GT FOLLOWING THE SUN

Full standing height circular shower with solid teak gratings and rotating screen
Mirror
Random teak floor
Stainless steel opening
porthole(s) with flyscreen

ELECTRICAL SYSTEMS

All 240v, 24v and 12v circuits (where applicable) protected by circuit breakers with main electrical load control panel
Electrical sockets
Heavy duty circuit breakers Isolating switches to all batteries
Onan generator 7kVA
24 Volt: Batteries - 2 x 180Ah zero-maintenance 'AGM' for exclusive port engine starting
Batteries - 2 x 180Ah zero-maintenance 'AGM' for exclusive starboard engine starting
Batteries - 2 x 180Ah zero-maintenance 'AGM' for domestic services
Circuit breaker 100amp for anchor winch
Emergency battery coupling system permits each engine to start from opposite engine battery bank
240 Volt: Battery charger 50amp to domestic batteries with trickle charge to port and starboard engine-start batteries
Polarity check and earth leakage protection system
Power points throughout the boat (fed from shore power or generator)
Shore power supply

ENGINES AND STERNGEAR

Aerodynamically designed engine air intakes
Automatic bilge pumps for forward bilge, engine bay and rudder bay with manual 'on' override
Automatic engine bay fire extinguisher system
Balanced rudders
Cathodic protection
Dripless shaft seals
Electric engine bay fan(s)
Electric trim tabs with cathodic protection
Engine bay lights
Engine room soundproofing
Exhaust overheat warning system
High capacity emergency manual bilge pump system with dedicated valves
Manganese bronze 'P' brackets
Manganese bronze propellers contra-rotating
Sea cocks on all inlets/outlets below waterline
Stainless steel alloy shafts
Water cooled engine exhausts with silencers and side outlets
Fuel System: Changeover valve system to permit each engine to draw fuel from, and return fuel to, either tank
Emergency fuel shut-off valves accessible via cable-operated remote control

04/23/2024

FAIRLINE TARGA 47 GT FOLLOWING THE SUN

High capacity water separators and fuel filters

Individual fillers and vents to port and starboard

Marine grade alloy fuel tanks x 2

Freshwater System: Automatic, pressurised supply

Calorifier hot water system

Water tank(s)

04/23/2024

FAIRLINE TARGA 47 GT FOLLOWING THE SUN

OWNER COMMENTS

Engines serviced March 2024.

04/23/2024

FAIRLINE TARGA 47 GT FOLLOWING THE SUN



04/23/2024

FAIRLINE TARGA 47 GT FOLLOWING THE SUN



04/23/2024

FAIRLINE TARGA 47 GT FOLLOWING THE SUN



04/23/2024

FAIRLINE TARGA 47 GT FOLLOWING THE SUN



04/23/2024

FAIRLINE TARGA 47 GT FOLLOWING THE SUN



04/23/2024

FAIRLINE TARGA 47 GT FOLLOWING THE SUN



04/23/2024

FAIRLINE TARGA 47 GT FOLLOWING THE SUN



04/23/2024

FAIRLINE TARGA 47 GT FOLLOWING THE SUN



04/23/2024

FAIRLINE TARGA 47 GT FOLLOWING THE SUN



04/23/2024

FAIRLINE TARGA 47 GT FOLLOWING THE SUN



04/23/2024

FAIRLINE TARGA 47 GT FOLLOWING THE SUN



04/23/2024

FAIRLINE TARGA 47 GT FOLLOWING THE SUN



04/23/2024

FAIRLINE TARGA 47 GT FOLLOWING THE SUN



04/23/2024

FAIRLINE TARGA 47 GT FOLLOWING THE SUN



04/23/2024

FAIRLINE TARGA 47 GT FOLLOWING THE SUN



04/23/2024

FAIRLINE TARGA 47 GT FOLLOWING THE SUN



04/23/2024

FAIRLINE TARGA 47 GT FOLLOWING THE SUN



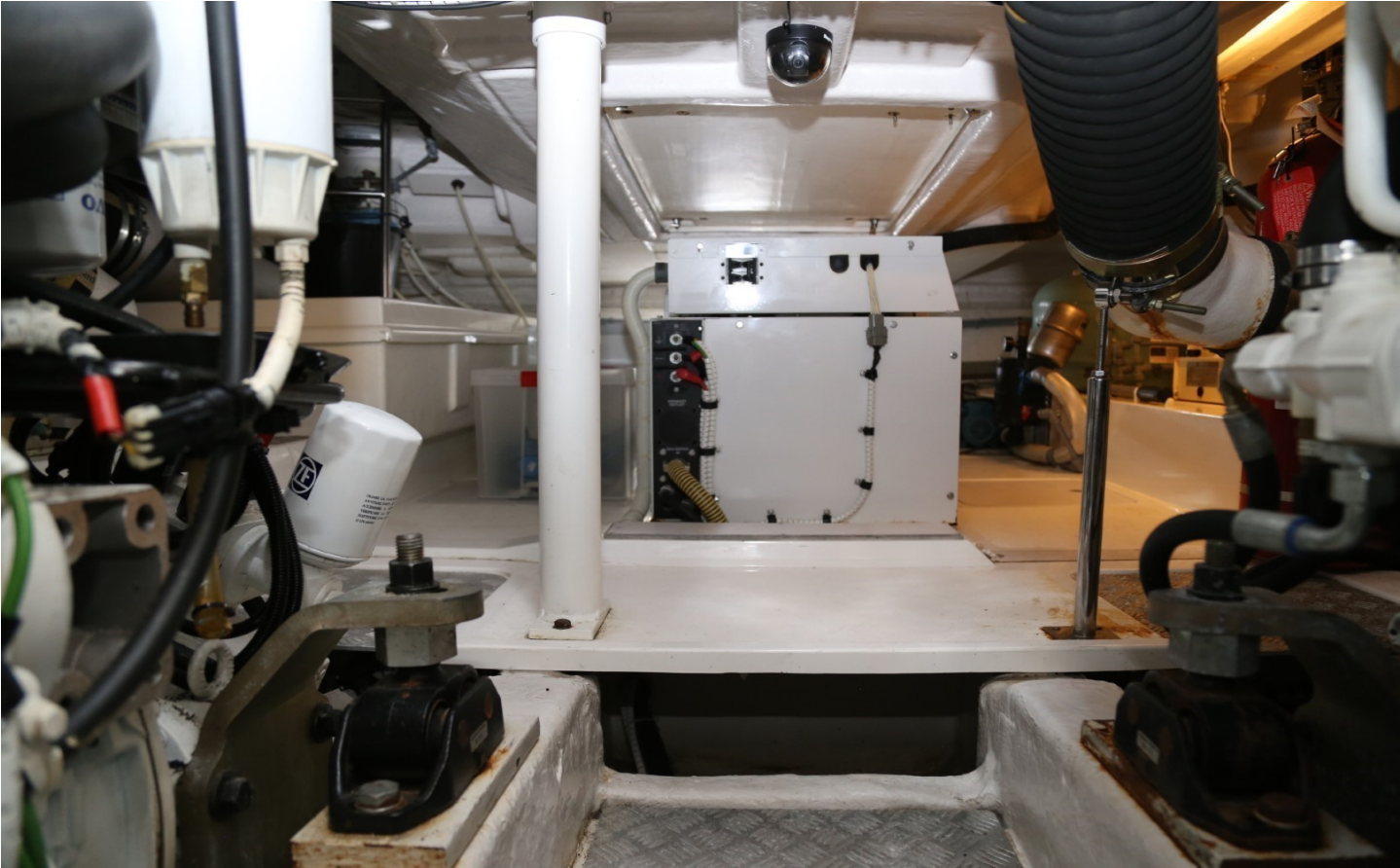
04/23/2024

FAIRLINE TARGA 47 GT FOLLOWING THE SUN



04/23/2024

FAIRLINE TARGA 47 GT FOLLOWING THE SUN



04/23/2024

FAIRLINE TARGA 47 GT FOLLOWING THE SUN



DISCLAIMER

Whilst every care has been taken in the preparation of these particulars, their accuracy is not guaranteed. They are intended as guides only and as such do not constitute a part of any contract. A prospective purchaser is advised to check all particulars and where appropriate and at his own expense to employ a qualified marine surveyor to carry out a survey and/or to have an engine trial conducted, which if conducted by us shall not imply any liability on our part. All dimensions, performance figures & range notes given are approximate and should be treated as a guide only. Pictures may be from a brochure or of a similar vessel. Engine hours shown are correct at the time of preparation of the particulars, but will vary with usage. Availability of specific vessels may be subject to change, we therefore recommend you call for confirmation. N.B. Ribs, dinghies, water toys and out-board engines are not included in the sale unless other wise stated.

+44 (0) 1305 766 504

SALES@JDYACHTS.COM

© JD YACHTS 2002 - 2024. ALL RIGHTS RESERVED.



A YACHT BROKERAGE WITH A DIFFERENCE

FOLLOW US

