

09/15/2025

FAIRLINE SQUADRON 55 MISS CHIVAS



JD Yachts
80 The Esplanade
Weymouth
Dorset
United Kingdom
DT4 7AA
Tel: +44 (0)1305 766 504
sales@jdyachts.com



FAIRLINE SQUADRON 55

MISS CHIVAS

GBP 199,950 INC TAX

MAIN CHARACTERISTICS

Year:	2000
Hull Colours:	White
Lying:	Ireland
Engine(s):	2 x 700 HP Diesel Volvo D12
Hours:	TBC
Length:	16.54 m / 54' 3"
Beam:	4.650 m / 15' 3"
Draft:	1.030 m / 3' 5"
Weight:	38 tons
Fuel Capacity:	2182 litres / 480 gallons
Water Capacity:	572 litres / 126 gallons
Accommodation:	6 berths in 3 cabins

09/15/2025

FAIRLINE SQUADRON 55 MISS CHIVAS

EXTRAS

- Bow & Stern Thruster
- Raymarine E80 Multifunction Display with Radar/Chart/Sounder/Camera
- Hydraulic Passerelle

STANDARD SPECIFICATION

HULLFORM & CONSTRUCTION

Designed by Bernard Olesinski and the Fairline Design Team

Deep 'V' forward; 18° deadrise aft

Isophthalic gel coat backed by an isophthalic resin-rich powder-bound glass mat

All gel coat and glass fibre is laid up by hand, incorporating chopped strand glass mat and unidirectional and woven rovings

Transverse and longitudinal strengthening stringers throughout hull

Full length moulded spray deflectors

The integral bathing platform gives the boat a longer waterline length for improved performance, particularly at reduced power settings

Engine bearers are moulded into the hull

The propellers are set in semi-tunnels enabling the engines to be located further aft, also reducing draught and improving efficiency by reducing the shaft angle

Hull/deck join bonded and bolted

The deck incorporates polyurethane foam cores for high strength and excellent thermal insulation

DECK

Stainless Steel Stemhead Roller

Delta Anchor with calibrated chain

Twin Stainless Steel Bow and Stern Cleats

2 x pairs Stainless Steel Spring Cleats

Stainless Steel Cleat and Grabrail on each Aft Wing

Stainless Steel Pulpit, Pushpit and Side Deck Rails with solid second rail and Fender Baskets

Stainless Steel Flybridge Side Grabrails

Stainless Steel Rubbing Strake

Full Set of IMCO Navigation Lights

Riding Light

Water and Fuel Fillers

Deck Light

Moulded Slip-resistant Deck Surface

Sunbathing Area on Foredeck Upholstered with Cushions

Teak-Laid bathing Platform with concealed Transom Ladder and Dinghy Stowage

Hydraulic Passerelle for access and Dinghy Handling

Electric Anchor Winch

Hot and Cold Transom Shower

Twin Horns

AFT COCKPIT

Self-draining Cockpit

Teak-Laid Floor

Access hatch to optional aft crew cabin

Self-draining wet locker

Access hatch to large stowage hold

09/15/2025

FAIRLINE SQUADRON 55 MISS CHIVAS

Twin transom gates to bathing platform
Twin warp stowage lockers
Cockpit Lights
Manual bilge pump locker
Stainless Steel access ladder to flybridge
Boat Hook
Heavy Duty 12V Socket

FLYBRIDGE & SECOND HELM POSITION

Glazed door to Internal Stairway
Hydraulic Power Steering
Electronic Single Lever Controls for Engines and Gearboxes
Duplicate Engine Instruments
Bow Thruster Controls
Stern Thruster Controls
ICOM HM162E DC VHF
Command Mic
Remote Anchor Winch Controls
Raymarine E80 Multifunction Display: Radar/Chart/Sounder/Camera
Raymarine ST6001 Autopilot Control
Compass
Helm Position Indicator
Trim Tab and Searchlight Controls
Echo Sounder and Speedometer/log repeaters with Sea temperature read-out
Double Helm Seat
Integral Fridge Unit
Central Griddle
Sink with Hot and Cold Water
Single Co-Pilot Seat
Large J-shaped Upholstered Dining Area
Stainless Steel Guardrails and Grabrails
GP Arch Supporting radar Antenna and Nav. Light Mast
Glove Locker
Covered Chart Table
Moulded Slip-Resistant Floor Surface
Moulded Perspex Wind-Deflecting Screen with Full Grab Rail
Twin Dome TV + Matching Dome

MAIN SALOON

Stainless Steel curved framed patio door to aft cockpit
Semi-circular upholstered settee with storage under
Low Table
Sideboard
Flat Screen TV
Stereo Radio/CD Player
Tinted Glass to side windows
Additional 240V Power Points

09/15/2025

FAIRLINE SQUADRON 55 MISS CHIVAS

Halogen Lighting
Access hatch to engines

GALLEY

4 Burner Electric Ceramic/ Halogen Hob
Microwave/ Conventional Grill Oven Unit
Refrigerator/ Freezer
Twin Sinks with hot and cold mixer tap
Avonite Worktop with Grabrail
Concealed Lighting
240V Power Points
Fire Extinguisher
Storage Cupboards and Drawers
Extractor Fan

UTILITY ROOM (ACCESS FROM GALLEY)

Work Top with Stowage
Washer/Drier
Freezer
Pull-out Ironing Board
Storage Cupboards
240V Power Point
Access to Engine Room

MAIN HELM POSITION

Stainless steel framed windscreen with opening side panels
Madrona Finish Instrument Panel
Double Helm Seat
Raymarine E120 Multifunction
Display: Radar/Chart/Sounder
1 Camera/MOB System
Icom M505 DSC VHF
Hydraulic Power Steering
Triple Windscreen Wipers
Electronic Single Lever Controls for Engines and Gearboxes
Bow Thruster Controls
Stern Thruster Controls
Raymarine ST60 Tridata System
Raymarine ST6001 Autopilot Control
Raymarine Colour Display
Raymarine RAY125 GPS Sensor
Raymarine Radome
Helm position indicator plus full engine instrumentation + gauges
Remote Anchor Winch Controls
Chart table and Light/Stowage
Control panel for generator

09/15/2025

FAIRLINE SQUADRON 55 MISS CHIVAS

Switches for Navigation and Riding Lights
Windscreen Wipers
Bilge Pumps and Engine bay extractor fans
Stereo Radio/CD Player

MASTER STATEROOM

King Size double bed with interior sprung mattress
Upholstered Bedhead
Twin Wardrobes with Interior Lights
Drawers under the bed
Halogen ceiling and reading lights
Hatch with flyscreen to foredeck
Twin opening portholes with flyscreens
Full length Mirror
Access to En Suite Shower/Toilet
Stereo radio/CD Player
2 x twin 240V Power Points

MASTER ENSUITE

Circular separate shower unit
Automatic shower tray pumpout system
Freshwater vacuum flush toilet with seacocks to outlet
Avonite Vanity unit with wash basin and hot and cold pressurised water
Opening Stainless Steel porthole with flyscreen
Mirrored high level lockers
Halogen Lighting
240V Shaving Point
Complete set of Bathroom Fittings

PORT & STARBOARD GUEST CABINS

Twin 6'8" Single Beds with Interior sprung mattresses
Bedside table & Lamp
Wardrobe with Interior Light
Twin opening portholes with flyscreens
Halogen ceiling and reading lights
2 x single 240v power points

GUEST/ DAY HEAD

Circular separate shower unit
Automatic shower tray pumpout system
Freshwater vacuum flush toilet with seacocks to outlet
Avonite Vanity unit with wash basin and hot and cold pressurised water
Opening Stainless Steel porthole with flyscreen
Mirrored high level lockers
Halogen Lighting

09/15/2025

FAIRLINE SQUADRON 55 MISS CHIVAS

240V Shaving Point

Complete set of Bathroom Fittings

AFT CABIN

Twin single berths

Wash room with toilet and handbasin

Stowage Space

Twin Opening Portholes with Flyscreens

Fire Extinguisher

Halogen Lighting

ENGINES & STERNGEAR

Access through utility Room

Engine/Generator Room Soundproofed

Water Cooled Engine Exhausts with silencers and side outlets

Aerodynamically designed engine air intakes

Automatic Engine Room Fire Extinguishers

Stainless Steel TEMET Shafts

Contra-rotating Manganese Bronze Propeller

Manganese Bronze 'P' Brackets

Balanced Manganese Bronze Rudders

Cathodic Protection

Automatic Bilge Pumps for Engine and Rudder Bays and Forward Area (Manual 'on' override for all pumps)

High Capacity Emergency Manual Bilge Pump System with Changeover Valves

Electric Engine Room Ventilation Fans

Engine Room Lights

Exhaust Overheat Warning System for both Engines

Dripless Shaft Seals

Seacocks on all inlets/outlets below waterline

FUEL SYSTEM

Twin marine grade alloy fuel tanks

Changeover valve system to permit each engine to draw fuel from and return fuel to either tank

Individual Fillers and Vents

Aircraft grade fuel filler and vent pipes

High capacity water separators and fuel filters

Audio/Visual 'water present in fuel filters' water system to lower helm

FRESH WATER SYSTEM

2 X 55 Gallon Water tanks

16 Gallon (73L) Calorifier hot water system

1kW 240v immersion Heater

Automatic Pressurised Supply

Manual override switch at lower helm

09/15/2025

FAIRLINE SQUADRON 55 MISS CHIVAS



09/15/2025

FAIRLINE SQUADRON 55 MISS CHIVAS



09/15/2025

FAIRLINE SQUADRON 55 MISS CHIVAS





09/15/2025

FAIRLINE SQUADRON 55 MISS CHIVAS



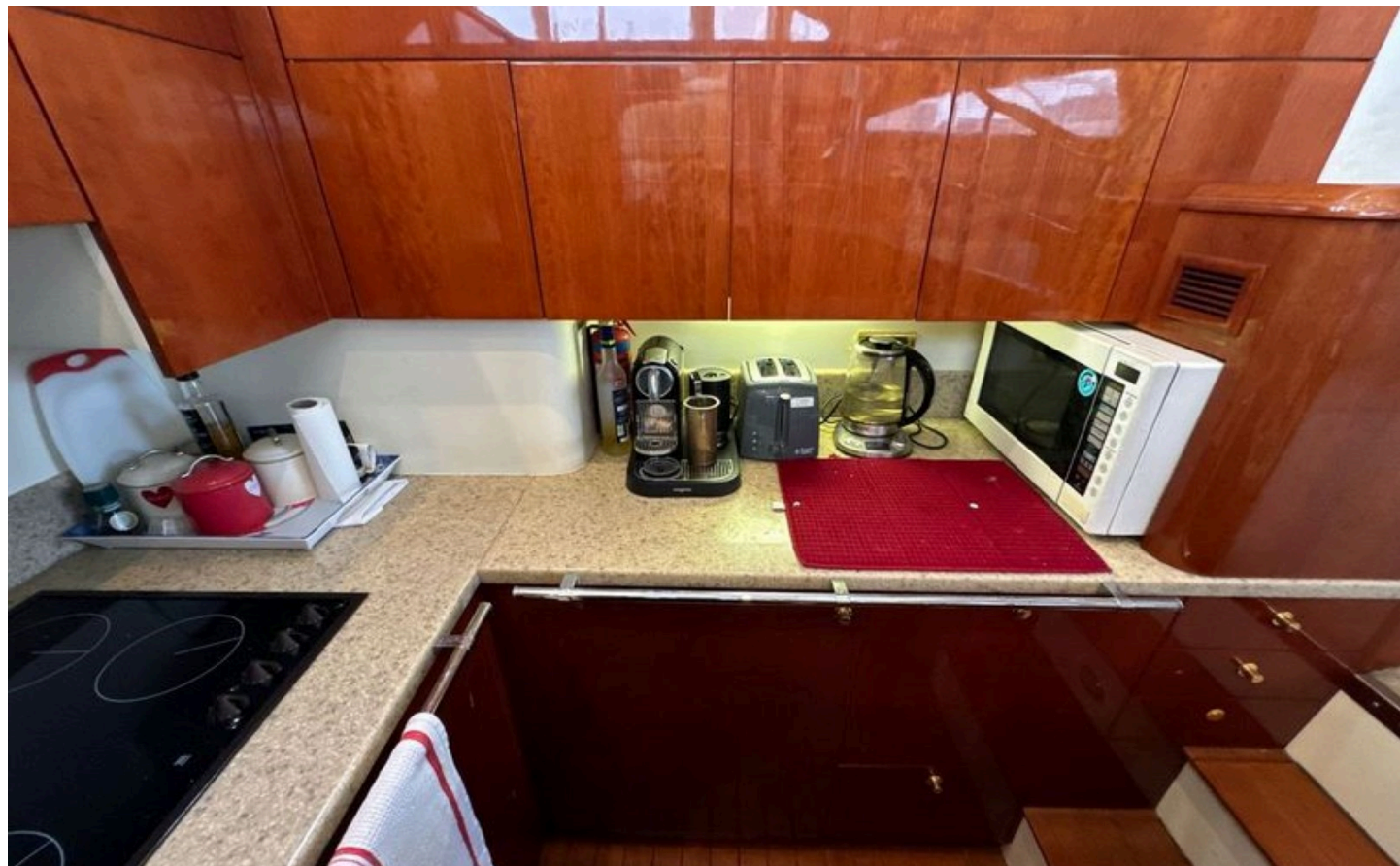
09/15/2025

FAIRLINE SQUADRON 55 MISS CHIVAS



09/15/2025

FAIRLINE SQUADRON 55 MISS CHIVAS



09/15/2025

FAIRLINE SQUADRON 55 MISS CHIVAS



09/15/2025

FAIRLINE SQUADRON 55 MISS CHIVAS





09/15/2025

FAIRLINE SQUADRON 55 MISS CHIVAS



09/15/2025

FAIRLINE SQUADRON 55 MISS CHIVAS



DISCLAIMER

Whilst every care has been taken in the preparation of these particulars, their accuracy is not guaranteed. They are intended as guides only and as such do not constitute a part of any contract. A prospective purchaser is advised to check all particulars and where appropriate and at his own expense to employ a qualified marine surveyor to carry out a survey and/or to have an engine trial conducted, which if conducted by us shall not imply any liability on our part. All dimensions, performance figures & range notes given are approximate and should be treated as a guide only. Pictures may be from a brochure or of a similar vessel. Engine hours shown are correct at the time of preparation of the particulars, but will vary with usage. Availability of specific vessels may be subject to change, we therefore recommend you call for confirmation. N.B. Ribs, dinghies, water toys and out-board engines are not included in the sale unless other wise stated.

+44 (0) 1305 766 504

SALES@JDYACHTS.COM

© JD YACHTS 2002 - 2025. ALL RIGHTS RESERVED.



A YACHT BROKERAGE WITH A DIFFERENCE

FOLLOW US

