

05/09/2024

PRINCESS V48 BLACK PEARL

JD YACHTS.

JD Yachts
80 The Esplanade
Weymouth
Dorset
United Kingdom
DT4 7AA
Tel: +44 (0)1305 766 504
sales@jdyachts.com



PRINCESS V48

BLACK PEARL

GBP 579,950 INC TAX

MAIN CHARACTERISTICS

Year:	2015
Hull Colours:	Dark Blue
Lying:	Portland, UK
Engine(s):	2 x 435 HP Diesel Volvo IPS 600
Hours:	352
Length:	15.58 m / 51' 1"
Beam:	4.110 m / 13' 6"
Draft:	1.140 m / 3' 9"
Weight:	16 tons
Fuel Capacity:	1325 litres / 291 gallons
Water Capacity:	364 litres / 80 gallons
Accommodation:	6 berths in 2 cabins

EXTRAS

- Cruisair Reverse Cycle Air-Conditioning Throughout
- Upgraded ONAN 11Kw Generator (233.6 hours - July 2023)
- Hi-Lo Bathing Platform
- Volvo Penta Joystick Control
- Side-Power Bow Thruster (with remote control)
- Stern Facing Camera
- Remote Control for Lewmar Anchor Winch
- Additional 10m of 10mm Anchor Chain (total 50m)
- Cockpit Sun Awning with complete Full Height Cockpit Cover
- Raymarine HybridTouch 15.4" Colour Multifunction Display
- Raymarine Autopilot
- Fish Finder
- AIS
- Teak Laid Bathing Platform
- Teak Laid Cockpit
- Teak Laid Side Decks
- Saloon - 28" LED TV with Fusion MS-AV700iMet
- Owners Stateroom - 28" LED TV with a Fusion MS-AV700i Radio/DVD/MP3 stereo with Bluetooth facility
- Forward Guest Cabin - 22" LED TV with Fusion MS-AV700i Radio/iPod/MP3 with Bluetooth facility
- Radio/DVD/MP3 stereo with Bluetooth facility
- Underwater Lights
- Dimmer Switch for Deck Saloon lighting
- Dimmer Switch for Lower Dinette lighting
- Dishwasher in Galley (drawer type-6 place setting)
- Lower Dinette to convert to double berth
- Mosquito screens for all opening portholes
- Cockpit Wetbar with Griddle
- Additional Fridge to Saloon
- Rovere Oak Interior Wood Gloss finish
- Saloon, Galley and Helm floors are Walnut
- Scissor berths in Forward Cabin in place of double berth
- Sunroof blinds
- 3 x Triangle cushions for back rests for sunbathers
- Windscreen Cover
- Bar heater in engine room
- 6 x Princess Cups
- 6 x Princess Sorcers
- 6 x Princess Plates (medium size)
- 6 x Princess Plates (large size)
- 6 x Princess Bowls

STANDARD SPECIFICATION

STANDARD EQUIPMENT

Power-assisted steering system
Volvo joystick manoeuvring control
24v DC/240v AC electrical system
240v shore power with 40-amp float battery charger
Remote control electric anchor winch
Electro-hydraulic trim tabs
VHF with DSC R/T
Speed and distance log
Echo sounder with alarm
Remote control searchlight
Combination microwave/conventional oven/grill
Refrigerator with deep freeze compartment
Electric quietflush toilets
Saloon and cockpit stereo CD/radio
Teak-laid transom platform/cockpit deck/stairs to side decks

DECK FITTINGS

Reversible electric anchor winch with foredeck and helm position controls
Self-stowing 20kg/44lb Delta anchor with 40m chain
Stemhead roller with automatic anchor launch and retrieve
Stainless-steel bow, stern and spring cleats
Stainless-steel pulpit and guard rails
Stainless-steel coachroof handrails
Foredeck hatch with integrated skylight
PVC rubbing band with stainless-steel insert
Full set of IMCO navigation lights
Riding light
Remote control searchlight
Twin electric horns
Fuel and water fillers

COCKPIT

Self-draining
U-shaped seating/dining area
Teak table
Overhead and low level courtesy lights
Tonneau cover
Stainless-steel grabrails
Transom hatch to stern lazarette
Access hatch to engine room
220/240v shore support inlet in locker
Life raft locker

05/09/2024

PRINCESS V48 BLACK PEARL

Transom platform with integrated swimming ladder (with optional electro-hydraulic raise/lower mechanism)

Twin transom doors

Hot and cold shower

Storage lockers

HELM POSITION

Helm seat with sit/stand facility

Full engine instrumentation

Fuel gauges

Single-lever engine controls

Joystick maneuvering control

Rudder position indicator

Power-assisted steering system and adjustable steering wheel

Remote control anchor winch

Trim tab controls with indicators

VHF with DSC R/T

Speed and distance log

Echo sounder with alarm

Remote control searchlight

High speed compass

Horn button

Chart area

Twin windscreen wipers

Windscreen freshwater pressure wash

Bilge pump controls with visual 'pump running' indicator (3)

UPPER SALOON

U-shaped sofa

Dining table

Cocktail cabinet

Refrigerator

Overhead downlighters

Electric opening roof

Triple stainless-steel framed sliding doors to cockpit

Radio/CD/MP3 with saloon and cockpit speakers

Timber-laid flooring

LOWER SALOON

L-shaped sofa

Table

Storage lockers

Overhead downlighters

Main electrical control panel with battery isolation switches

Opening portlights (2)

GALLEY

Avonite (or similar) worktop
3 ring electric hob
Stainless-steel sink with Monobloc mixer tap
Combination microwave/conventional oven with grill
Full size refridgerator with separate freezer
Waste bin
Storage cupboards, drawers and lockers
Timber-laid flooring
Under floor storage bin
Opening portlights

OWNERS STATEROOM

Large double bed with drawers below
Wardrobe with shelves
Drawers and storage lockers
Overhead and individual berth lights
Sofa
Dressing table
Panoramic trapezoidal windows in toughened glass with opening ports
En-suite bathroom:
Avonite worktop
Wash basin with Monobloc mixer tap
Separate stall shower with extractor
Mirror
Storage locker
Opening portlight

FORWARD GUEST CABIN

Scissor Berths with drawers below
Wardrobe
Deck hatch with integrated fly screen and blind
Storage lockers
Downlighters and individual berth lights
Trapezoidal side windows with opening ports
En-suite bathroom:
Wash basin with Monobloc mixer tap
Separate stall shower with extractor
Mirror
Storage locker
Opening portlight

POWER AND DRIVE SYSTEMS

Power-assisted steering
Electronic engine controls

Joystick manoeuvring system
Volvo active corrosion protection system
Engine room extractor fans with electronic time delay
Trim tabs with indicators
Engine room lighting

ELECTRICAL SYSTEMS

24 Volt:

4 x heavy-duty batteries for engine starting
4 x heavy-duty auxiliary batteries
Engine alternators charge via split charge relays to isolate engine start batteries from auxiliaries
40-amp 24v float battery charger
Battery paralleling system (for engine start back-up)
Remote battery master switches with control switch at main panel
Circuit breakers on all circuits

220/240 Volt:

Shore support inlet (32A)
Power points in owner's stateroom, forward guest cabin, galley (double), lower and upper saloon
Polarity check system
Earth leakage safety trip
Shaver points in both bathrooms

FUEL SYSTEM

Twin fuel tanks (in NS8 marine grade alloy) with interconnection system
Fuel fillers on both side decks
High-capacity fuel filter/water trap
Remote fuel cocks in cockpit locker
Fuel gauges on helm console

WATER SYSTEM

Water heated by engine and 240v immersion heater
Automatic water pump with filter
Main circuit breaker at switch panel
Water level gauge
Deck filler

FIRE EXTINGUISHERS

Automatic fire extinguisher in engine room and generator space

BILGE PUMPS

Automatic electric bilge pumps with manual override (3 in all)
High-capacity manual bilge pump with valve system and suction points in engine room and accommodation space

OWNER COMMENTS

IPS Drives Serviced 2023 (serviced every other year) Engines Serviced 2022 (serviced every other year) Williams 285 Tender available under separate negotiation with chocks, straps and cover.











05/09/2024

PRINCESS V48 BLACK PEARL









05/09/2024

PRINCESS V48 BLACK PEARL



05/09/2024

PRINCESS V48 BLACK PEARL



05/09/2024

PRINCESS V48 BLACK PEARL





05/09/2024

PRINCESS V48 BLACK PEARL



A detailed view of the helm station on a boat. The steering wheel is black leather with silver spokes and a central silver hub. Behind the wheel, there are several digital displays, including one showing 22.8°C. To the right of the wheel is a silver throttle lever and a black control panel with various buttons. The dashboard is black and features several analog gauges and digital displays. The background shows a marina with other boats and a building.





05/09/2024

PRINCESS V48 BLACK PEARL



05/09/2024

PRINCESS V48 BLACK PEARL



05/09/2024

PRINCESS V48 BLACK PEARL





















05/09/2024

PRINCESS V48 BLACK PEARL

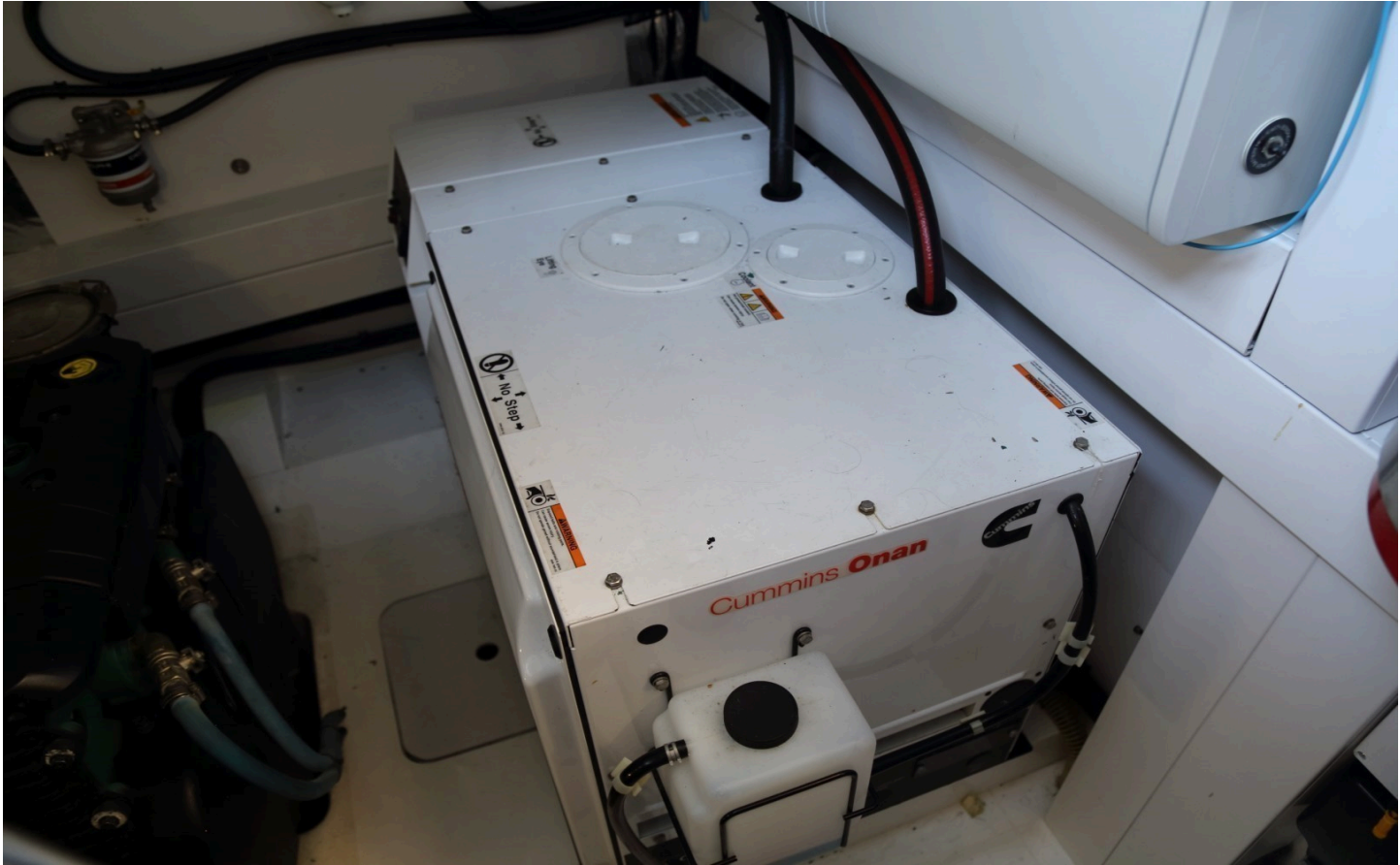






05/09/2024

PRINCESS V48 BLACK PEARL



05/09/2024

PRINCESS V48 BLACK PEARL



DISCLAIMER

Whilst every care has been taken in the preparation of these particulars, their accuracy is not guaranteed. They are intended as guides only and as such do not constitute a part of any contract. A prospective purchaser is advised to check all particulars and where appropriate and at his own expense to employ a qualified marine surveyor to carry out a survey and/or to have an engine trial conducted, which if conducted by us shall not imply any liability on our part. All dimensions, performance figures & range notes given are approximate and should be treated as a guide only. Pictures may be from a brochure or of a similar vessel. Engine hours shown are correct at the time of preparation of the particulars, but will vary with usage. Availability of specific vessels may be subject to change, we therefore recommend you call for confirmation. N.B. Ribs, dinghies, water toys and out-board engines are not included in the sale unless other wise stated.

+44 (0) 1305 766 504

SALES@JDYACHTS.COM

© JD YACHTS 2002 - 2024. ALL RIGHTS RESERVED.