

05/08/2024

PRINCESS 42 POLYPUS

**JD YACHTS.**

JD Yachts  
80 The Esplanade  
Weymouth  
Dorset  
United Kingdom  
DT4 7AA  
Tel: +44 (0)1305 766 504  
sales@jdyachts.com



**PRINCESS 42**

**POLYPUS**

GBP 249,950 INC TAX

MAIN CHARACTERISTICS

|                 |                                      |
|-----------------|--------------------------------------|
| Year:           | 2004                                 |
| Hull Colours:   | White                                |
| Lying:          | Portland, UK                         |
| Engine(s):      | 2 x 430 HP Diesel Volvo TAMD 74L EDC |
| Hours:          | 842                                  |
| Length:         | 13.48 m / 44' 3"                     |
| Beam:           | 4.140 m / 13' 7"                     |
| Draft:          | 1.090 m / 3' 7"                      |
| Weight:         | 16 tons                              |
| Fuel Capacity:  | 1362 litres / 299 gallons            |
| Water Capacity: | 455 litres / 100 gallons             |
| Accommodation:  | 6 berths in 2 cabins                 |

**EXTRAS**

- NEW Exterior Cockpit & Flybridge Upholstery trimmed in Silvertex (Colour Titanium with Navy Blue Inserts Embossed with Princess Emblem) (2022)
- NEW Raymarine Axiom 9" Touchscreen MFD to Upper Helm (2022)
- Furuno Navnet GPS/Radar Chartplotter to Lower Helm
- Furuno Open Array Radar
- Side Power Bow Thruster with Joystick Controls to both Helms
- Side Power Stern Thruster with Joystick Controls to both Helms
- Fischer Panda 4Kva Generator
- Eberspacher Heating
- NEW Step Lighting to Flybridge (2023)
- NEW Underwater Lights (2023)
- NEW Cockpit Canopy (2023)
- Raymarine ST60 Depth Log to Lower Helm
- Raymarine ST60 Speed Log to Lower Helm
- Raymarine ST60 Tridata Log to Upper Helm
- Raymarine ST6000+ Autopilot to both Helms
- Holding Tank
- NEW Samsung Microwave (2020)
- NEW Flybridge Covers (2020)
- NEW 4G Router (2021)
- NEW Illuminated Boat Name Aft (2021)
- NEW Hitachi Smart TV to Saloon (2021)
- NEW USB Port and iPad Brackets to Saloon (2022)
- Saloon Sofa to Berth Conversion
- Teak Laid Cockpit
- Teak Laid Bathing Platform
- Teak Laid Steps to Sidedecks
- NEW (2022) 2 x Engine Batteries and 4 x Domestic Batteries

## **STANDARD SPECIFICATION**

### **DECK FITTINGS**

Teak-laid transom platform, cockpit deck, flybridge stairway and stairs to side decks  
Reversible electric anchor winch with foredeck, main helm and flybridge controls  
Self-stowing 16kg Delta anchor with 30 meters of chain  
Stemhead roller with automatic anchor launch and retrieve  
Deck hatch access to chain locker  
Stainless steel bow, stern and spring cleats  
Bow and stern fairleads  
Stainless steel pulpit and guard rails  
Stainless steel coachroof and flybridge handrails  
Foredeck hatch  
Stainless steel rubbing band with rubber insert  
Full set of IMCO navigation lights  
Riding light  
Dual station remote control searchlight  
Twin electric horns  
Fuel and water fillers

### **AFT COCKPIT**

Self-draining  
Upholstered seat with fender and life raft stowage space below  
Cockpit lighting  
Cockpit cover  
Stainless steel handrails  
Gas strut assisted hatch to lazarette stowage area  
Lockable access hatch to engine room  
Overboard vented, self-draining locker for 2 gas bottles  
Transom door leading to integral bathing platform  
Reserve manual bilge pump and controls  
Remote fuel cocks located in locker  
Full-length transom bathing platform with foldaway swimming ladder, hot and cold shower, teak decking, storage compartment and dinghy storage removable chock system  
220/240v shore support inlet and cable stowage locker

### **FLYBRIDGE**

Dual station instrument controls (see Lower Helm Position)  
Double helm seat with fore and aft adjustment  
U-shaped upholstered sofa with drinks table  
Double sunbed with cushions  
Loudspeakers linked to saloon stereo CD/radio  
Integral stairway from aft cockpit with access hatch



Wind deflector screens  
Stainless steel handrails  
GRP radar arch  
Console and seat covers  
Matched whip aerials for VHF R/T and radio  
Refrigerated top loading cool box  
Bilge pump audible alarm

## **LOWER HELM POSITION**

Twin helm seats with fore and aft adjustment for helmsman  
Twin windscreen wipers with blade-mounted freshwater screen wash system  
Burr elm instrument console with engine instruments and fuel gauges

## **DUAL STATION INSTRUMENTS AND CONTROLS AT FLYBRIDGE AND LOWER HELM POSITION**

Rudder position indicator  
Electronic engine controls  
Visual and audible engine warning system  
Hydraulic steering  
Electric anchor winch remote control  
Trim tab controls with indicators  
VHF with DSC R/T with intercom to flybridge  
Speed and distance log  
Echo sounder with alarm  
Remote control searchlight  
High speed magnetic compass  
Horn button  
Bilge pump controls with visual 'pump running' warnings  
24v and 220/240v electrical control panels  
PVC sunscreens  
Riding light, helm and navigation light control switches  
12v outlet  
Chart table with light and chart stowage  
Sliding tinted side window adjacent to helmsman  
Stowage under helm seat

## **DECK SALOON**

U-shaped sofa with dining table to starboard (converts to double berth)  
Moveable 2-seater sofa  
Stereo CD/radio with saloon and exterior speakers  
Sideboard units with glass, bottle and general stowage and space for optional refrigerator  
Curtains, venetian blinds or sunscreens to all windows and doors  
Tinted opening side windows

05/08/2024

## PRINCESS 42 POLYPUS

Overhead lighting  
Triple stainless steel framed sliding doors to cockpit  
Clock with barometer

### **GALLEY**

Avonite worktop  
Recessed 3-zone gas hob with flame-failure protection and cover  
Extractor fan  
Combination microwave/ conventional oven with grill  
Twin-bowl stainless steel sink with mixer tap  
24v/240v fridge/freezer  
Overhead lighting  
Dedicated crockery and cutlery stowage  
General storage cupboards  
Sliding tinted window

### **OWNER&RSQUO;S CABIN AND EN-SUITE**

Large double bed with drawers below  
Large wardrobe  
Forward mirror  
Dressing table with mirror  
Cupboard with shelves  
Overhead lighting and individual berth lights  
Deck hatch with flyscreen and blind  
Washbasin with mixer tap  
Separate shower area with automatic pump-out  
Extractor fan  
WC roll holder  
Glass holder  
Soap dish in shower  
Towel ring  
Mirror  
Storage locker

### **GUEST CABIN**

Two full-size single berths  
Wardrobe with shelf space  
Storage lockers  
Overhead lighting and individual berth lights

### **GUEST/ DAY HEAD**

Washbasin with mixer tap  
Shower area with automatic pump-out  
Extractor fan  
WC roll holder  
Glass holder  
Soap dish in shower  
Towel ring  
Mirror  
Storage lockers  
Separate access to passageway

## **POWER AND DRIVE SYSTEMS**

4-bladed propellers in nickel aluminium bronze  
Engine room lighting  
Hydraulic steering system  
Lockable access hatch and ladder from cockpit to engine room  
Trim tabs with indicators Electronic engine and gear shift controls  
Engine room extractor fan with electronic time delay  
2 x heavy-duty batteries for engine starting  
4 x heavy-duty auxiliary batteries  
Battery link facility with remote control at helm position  
Both battery banks are charged using a voltage sensitive relay that parallels both battery banks when a charging source is present  
60-amp 24v float battery charger  
Remote battery master switches with control switch at main switch panel  
Circuit breakers on all circuits  
24v to 12v voltage dropper on certain navigation and radio circuits  
220/240 Volt:  
Shore support inlet in cockpit locker with storage for cable  
Polarity check system  
Earth leakage safety trip  
Circuit breakers on all circuits  
Power points (240v) in:  
Owner's suite  
Guest suite  
Galley  
Saloon  
Shaver points in both bathrooms

## **FUEL SYSTEM**

Fuel fillers on port and starboard side decks  
High-capacity fuel filters/water traps  
Remote fuel cock controls in cockpit locker  
Fuel gauges at lower helm position

## **WATER SYSTEM**

Water heated by engine and 240v immersion heater

Automatic water pump with filter

Main circuit breaker at switch panel

Water level gauge

Deck filler

## **BILGE PUMPS**

Automatic electric bilge pumps (with manual override) in:

Engine room

Forward accommodation

Aft lazarette (4 in all)

High-capacity manual bilge pump with valve system and suction points in the same areas

**OWNER COMMENTS**

Tender and outboard available under separate negotiation. Refurbished and replacement SIMRAD VHF handsets (2023) Replacement flush and rinse pumps (2023) Carbon filter replacement (2023)

05/08/2024

PRINCESS 42 POLYPUS





05/08/2024

PRINCESS 42 POLYPUS





05/08/2024

PRINCESS 42 POLYPUS





05/08/2024

PRINCESS 42 POLYPUS





05/08/2024

PRINCESS 42 POLYPUS

















05/08/2024

PRINCESS 42 POLYPUS





05/08/2024

PRINCESS 42 POLYPUS









05/08/2024

PRINCESS 42 POLYPUS





05/08/2024

PRINCESS 42 POLYPUS

















05/08/2024

PRINCESS 42 POLYPUS











05/08/2024

PRINCESS 42 POLYPUS





05/08/2024

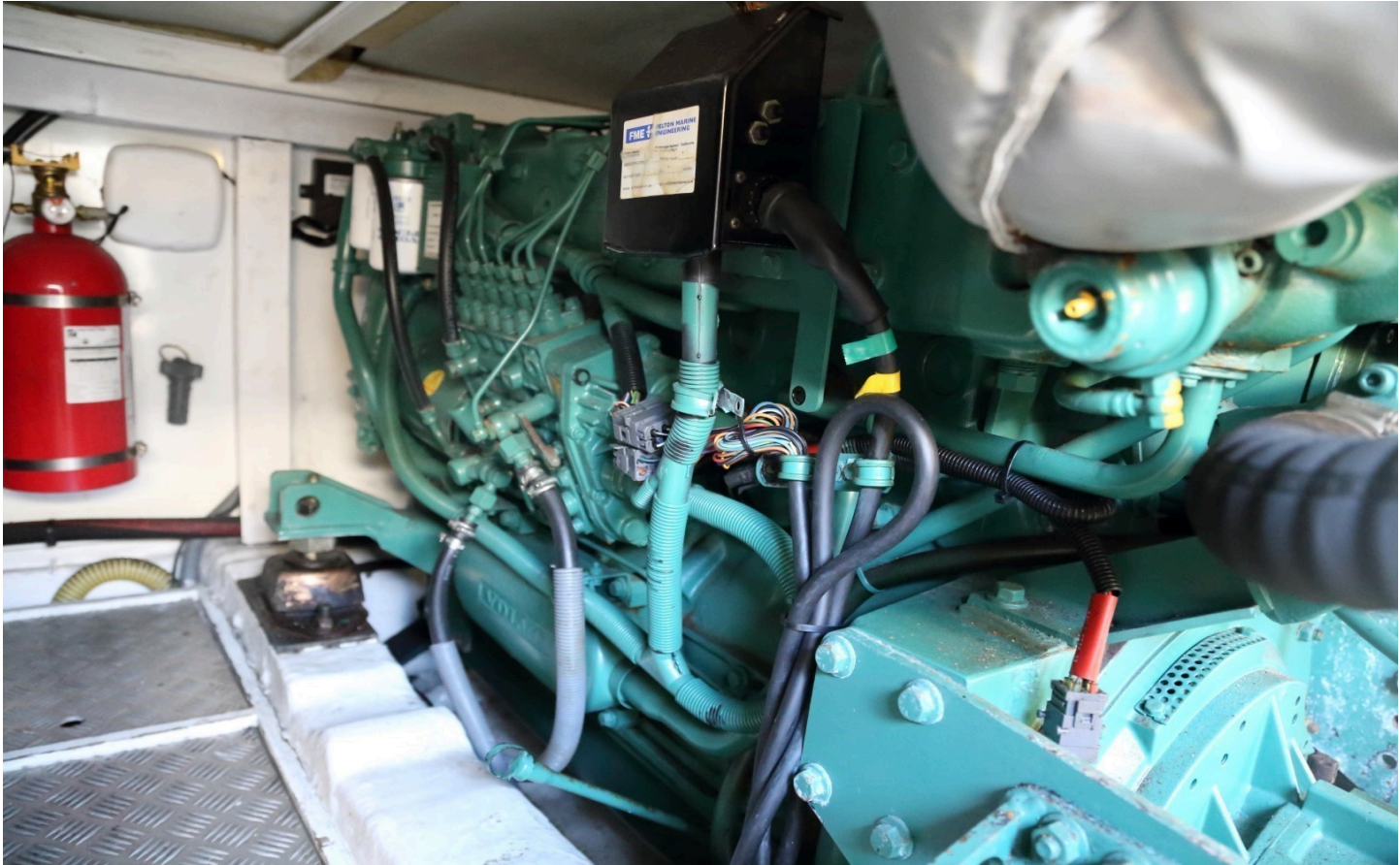
PRINCESS 42 POLYPUS













## DISCLAIMER

Whilst every care has been taken in the preparation of these particulars, their accuracy is not guaranteed. They are intended as guides only and as such do not constitute a part of any contract. A prospective purchaser is advised to check all particulars and where appropriate and at his own expense to employ a qualified marine surveyor to carry out a survey and/or to have an engine trial conducted, which if conducted by us shall not imply any liability on our part. All dimensions, performance figures & range notes given are approximate and should be treated as a guide only. Pictures may be from a brochure or of a similar vessel. Engine hours shown are correct at the time of preparation of the particulars, but will vary with usage. Availability of specific vessels may be subject to change, we therefore recommend you call for confirmation. N.B. Ribs, dinghies, water toys and out-board engines are not included in the sale unless other wise stated.

+44 (0) 1305 766 504

SALES@JDYACHTS.COM

© JD YACHTS 2002 - 2024. ALL RIGHTS RESERVED.